



ENCORE
ELECTRONICS

ENMVG

USB Audio/Video Grabber

User's Guide

User's Notice

This manual is provided "as is" without warranty of any kind, either express or implied, including but not limited to the implied warranties or conditions of merchantability or fitness for a particular purpose. In no event shall we, its directors, officers, employees or agents be liable for any indirect, special, incidental, or consequential damages (including damages for loss of profits, loss of business, loss of use or data, interruption of business), even if we have been advised of the possibility of such damages arising from any defect or error in this manual or product.

Specifications and information contained in this manual are furnished for information use only, and are subject to change at any time without notice, and should not be construed as a commitment by us. We assume no responsibility or liability for any errors or inaccuracies that may appear in this manual, including the products and software described in it.

No part of this manual, including the products and software described in it, may be reproduced, transmitted, transcribed, stored in a retrieval system, or translated into any language in any form or by any means, except documentation kept by the purchaser for backup purposes, without the express written permission of us.

Product warranty or service will not be extended if: (1) the product is repaired, modified or altered, unless such repair, modification or alteration is authorized in writing by us; or (2) the serial number of the product is defaced or missing.

Products and corporate names appearing in this manual may or may not be registered trademarks or copyrights of their respective companies, and are used only for identification or explanation and to the owners' benefit, without intent to infringe.

- Windows, MS-DOS, and DirectX are registered trademarks of Microsoft Corporation.
- Adobe and Acrobat are registered trademarks of Adobe Systems Incorporated.

The product name and revision number are both printed on the product itself. Manual revisions are released for each product design represented by the digit before and after the period of the manual revision number. Manual updates are represented by the third digit in the manual revision number.

Contents:

Chapter 1: Introduction	1
1.1 Package Contents	1
1.2 System Requirements.....	1
Chapter 2: Getting Started	2
2.1 Connect ENMVG.....	2
2.2 Device Driver Installation.....	2
2.3 Install the Utility software.	5
Chapter 3: Launch the Software	8
3.1 The ENMVG utility	8
3.2 Record Video	8
3.3 Snapshot Image.....	9
3.4 Playback Video	10
3.5 Browse Image	12
Chapter 4: Supports Center:.....	12

Chapter 1: Introduction

1.1 Package Contents

Upon receiving your ENMVG, please make sure the following items are included in the ENMVG package.

- ENMVG Device
- CD
- Quick Installation Guide
- USB cable

1.2 System Requirements

- Microsoft Windows® XP/Windows Vista™
- IBM® PC or compatible, with Intel® Pentium® 4 2.0GHz CPU or better
- Minimum 128MB memory and 100 MB hard disk space
- 1024x768 graphic card, DirectX® 9.0c or above compatible graphic card or higher
- One free USB2.0 port.
- CD-ROM drive
- Hard Disk: 5400 RPM or above (7200 RPM preferred)

Chapter 2: Getting Started

2.1 Connect ENMVG

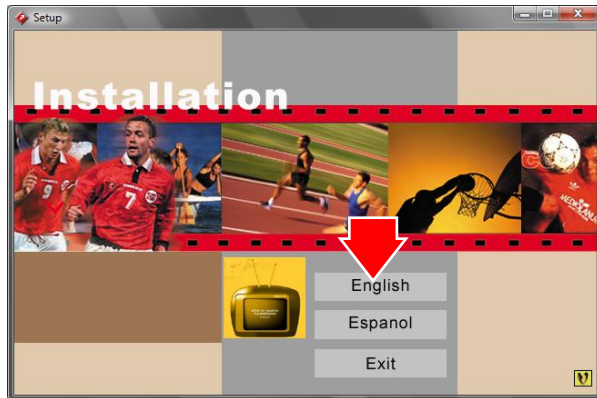
To install the ENMVG into your computer, follow the steps below:



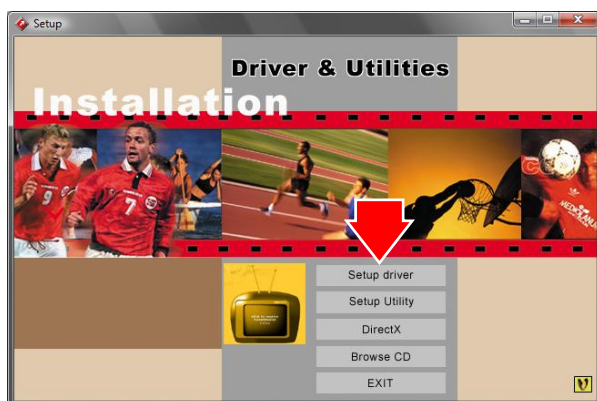
1. Connect the ENMVG to PC USB Hub.

2.2 Device Driver Installation

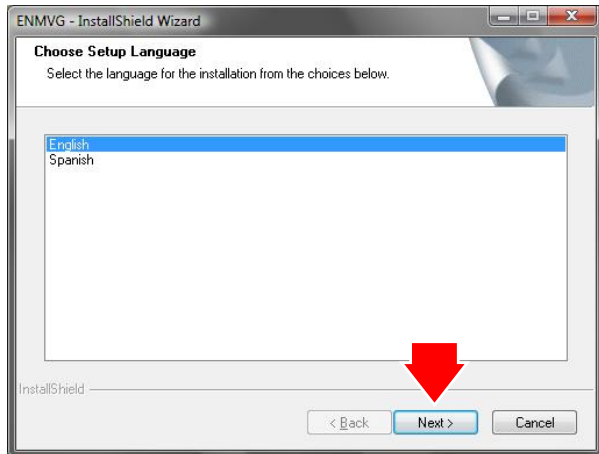
Placed the CD disk that comes with the ENMVG in the CD-ROM drive, then follow the on-screen installation guide below.



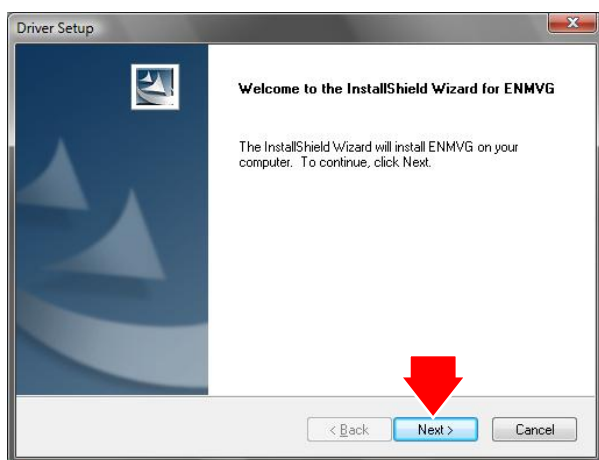
1. Insert the installation CD into the CD-ROM drive. The setup screen will automatically appear.
2. Select the language



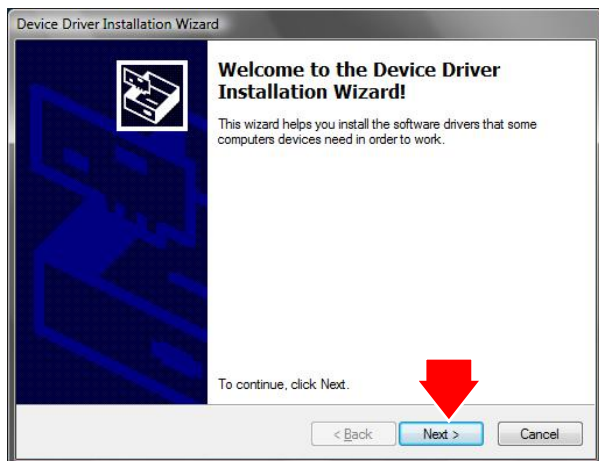
3. Click the "Setup Driver" button.



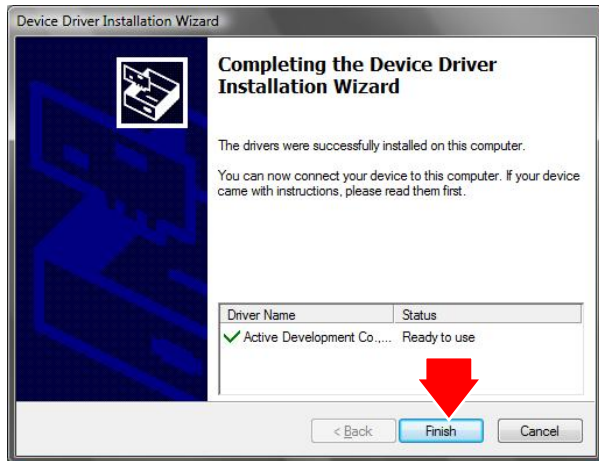
4. Select the Language and click “Next” to start installation.



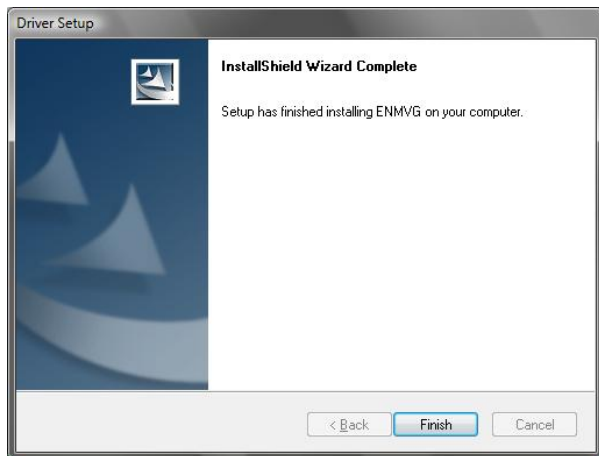
5. Click “Next” button to continue.



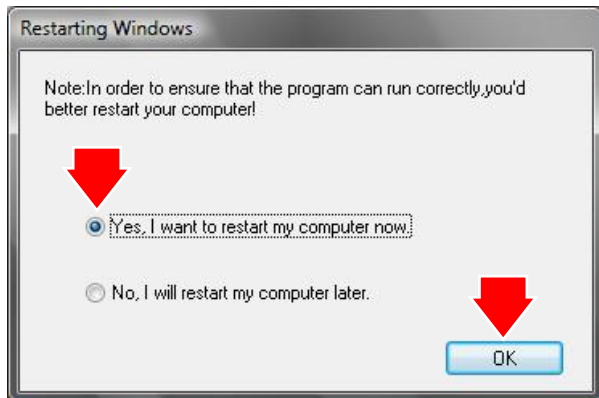
6. Click “Next” button to continue.



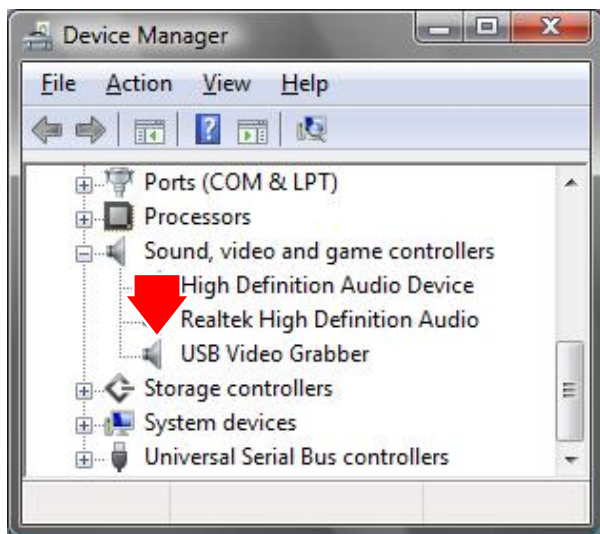
7. Installation wizard will automatically copy driver to PC system, and then click “Finish” button.



8. Click “Finish” button.



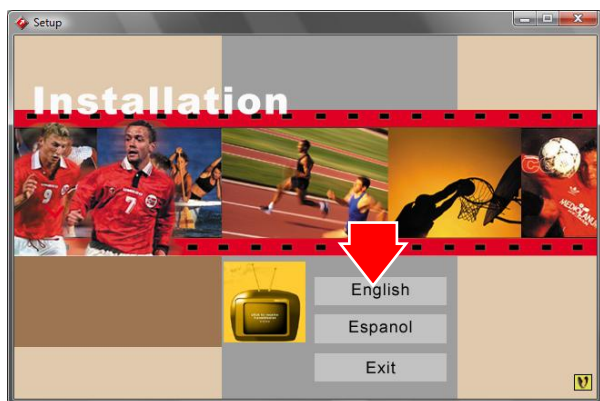
9. Click “OK” button to restart PC system.



10. Connect the ENMVG Device to PC USB Hub, then system will detect new driver “USB Video Grabber”.

11. To make sure the driver is properly installed and started, open the “Device Manager”. Please double-click the “Sound, video and game controller”

2.3 Install the Utility software.

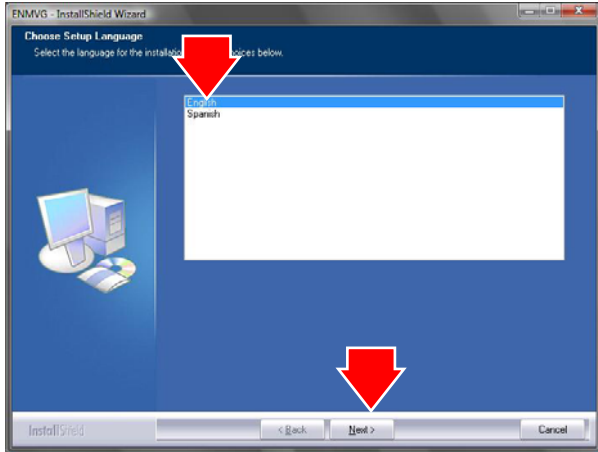


1. Insert the installation CD into the CD-ROM drive. The setup screen will automatically appear.

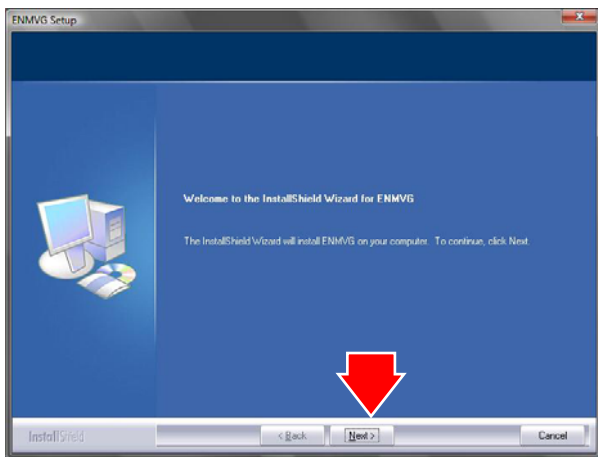
2. Select the language



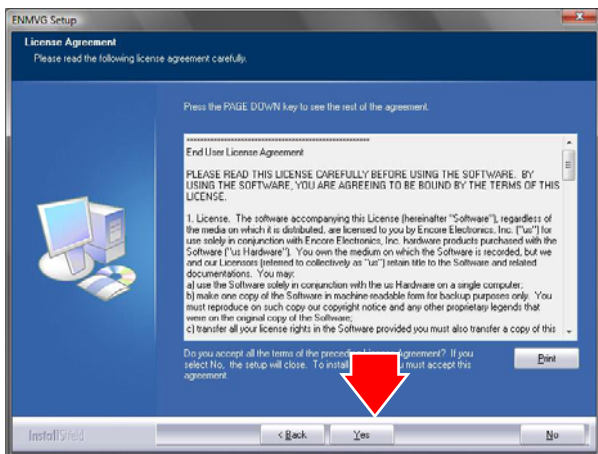
3. Click the “Setup Utility” button.



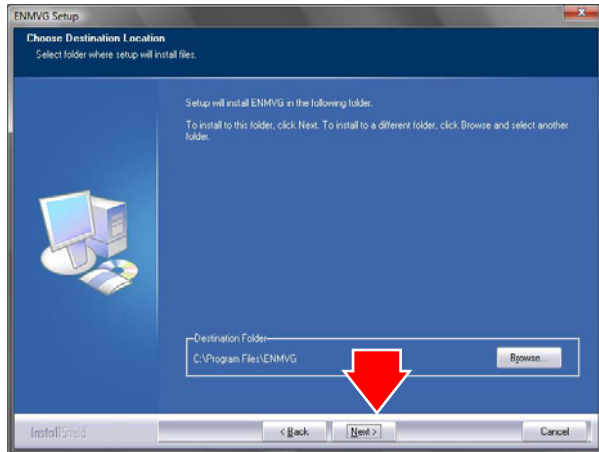
4. Select the Language and click “Next” to start installation.



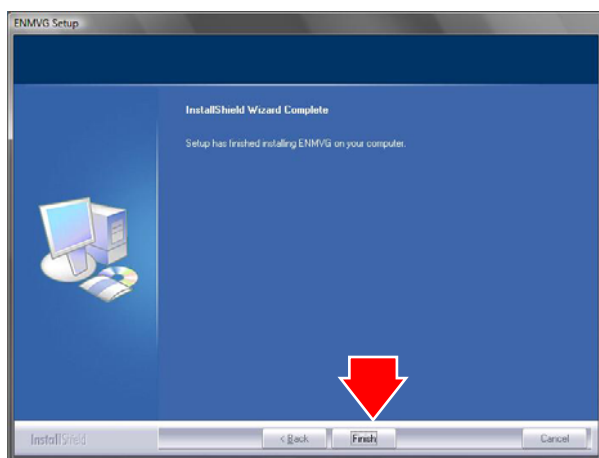
5. Click “Next” button to continue.



6. Click “Yes” button to continue.



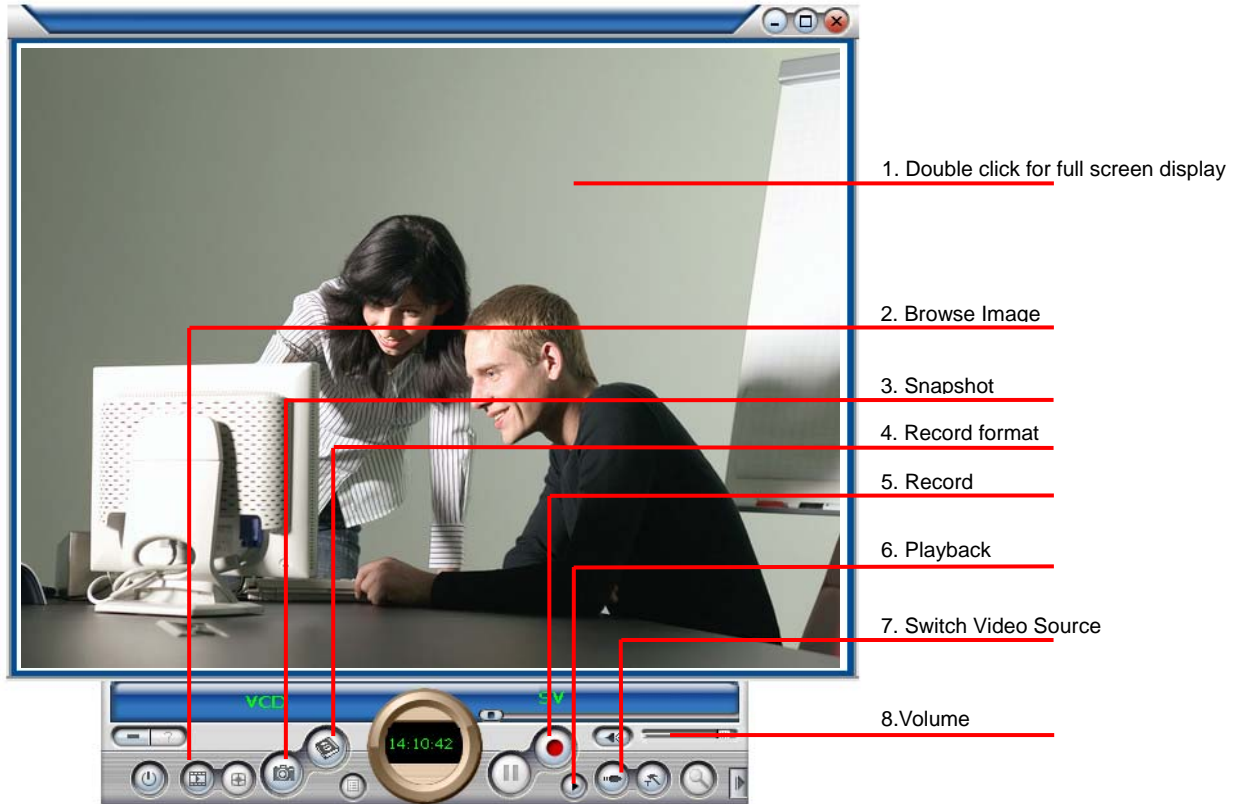
7. Click “Next” button or choose setup folder for installation.



8. Click “Finish” button to exit.

Chapter 3: Launch the Software

3.1 The ENMVG utility

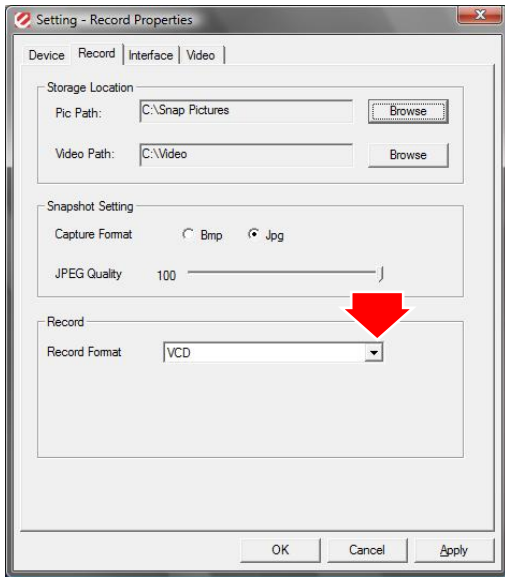


1. Double click for full screen display
2. Browse Image: To open image folder (refer to “3.5 Browse Image” on page 12.)
3. Snapshot: Capture current video frame as BMP or JPG image
4. Record format: Video output format selection
5. Record: Record/Stop Record
6. Playback: Play recorded video (refer to “3.4 Playback Video” on page 10.)
7. Switch Video Source: Click it to select Composite Video In or S-Video In
8. Volume: Adjust the volume or mute

3.2 Record Video



Click the “Setting” button to setup the record format



Setup the video format

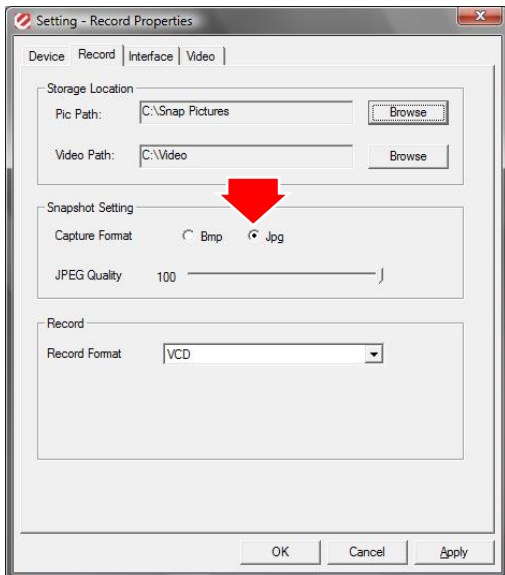


Click "Record" button to start capturing video

3.3 Snapshot Image



Click the "Setting" button to setup the image format



The ENMVG supports BMP and JPEG image format. The default is JPEG. Please choose your desired format



Click 'Snapshot' button to capture image

3.4 Playback Video



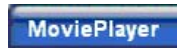
Click "Playback" button to select video file.



Choose the video then click "open" button.



Movie Player function List:



1 About: To show the current version info



2 Exit: To exit the video playback window; alternatively, press [Esc] or [ALT]+[F4] on keyboard simultaneously



3 Minimize: To minimize the video playback window, click "MoviePlayer" in desktop taskbar to restore display



4 Hide Control Panel: To hide video control panel, right click video window and select "Control Panel" to restore display



5 Options: Click to open "Options" dialog and adjust settings for video window, snapshots, and playlist



6 Browse Image: To open image folder (refer to "3.5 Browse Image" on page 12.)



7 Step Backward: Step by step rewind recorded video



8 Step Forward: Step by step forward recorded video



9 Slow Backward: To slow rewind play recorded video



10 Slow Forward: To slow forward play recorded video



11 Fast Backward: To fast rewind play recorded video



12 Fast Forward: To fast forward play recorded video



13 Mute: To turn off audio, click again to restore



15 Volume Adjust: Drag the slider with the mouse or use Left and Right arrow on keyboard to adjust volume



14 Play/Pause: Click to play the current video file, click again to pause, click once more to continue



16 Stop Play: Stop



17 Snapshot: Capture current video frame as BMP or JPG image

Default saved file name is “snapshot time” and saved under C:\My Pictures. You also can open "Snap Setting" option in "Options" to set snapshot saving directory, image format, and select rename file.

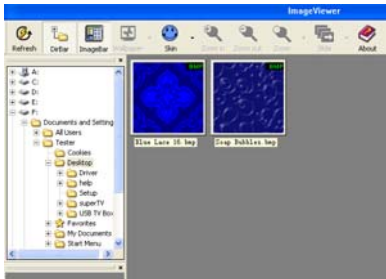


18 Play List: Show/Hide the Play List Window. By default, video files shown are from the record directory, C:\Video\

3.5 Browse Image

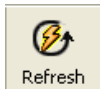


Click the “Browse Image” to retrieve the saved pictures



You can use the “Browse Image” software to control picture zoom in/out, or rename

The top toolbar contains:



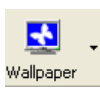
Refresh: To renew display snapshot image in current folder



Directory Panel: Show/Hide the Directory Panel on the left window pane, through which you can browse and select folder



Image Bar: Show/Hide the Image Bar on the left of window, through which you can preview snapshot image



Set Wallpaper: Set the current image as desktop wallpaper, click the right drop-down arrow to select wallpaper display mode



Change Skin: To set the skin of the image browser window



Zoom out: To shrink display current image



Zoom in: To magnify current image



Match Zoom: You can select the matched display mode in the drop-down arrow

Full Size: Shows image at 100% magnification

Fit Image: Magnifies image to fit screen or window

Fit Width: Magnifies image to fit width of screen or window

Fit Height: Magnifies image to fit height of screen or window

Lock: Locks the viewer at the current zoom level

Chapter 4: Supports Center:

For more information, please check our website.

<http://www.encore-usa.com/>

January 01, 2009
Version: 1.0